



**Enerdrive**  
DRIVING YOUR ENERGY NEEDS

# eSYSTEM-C



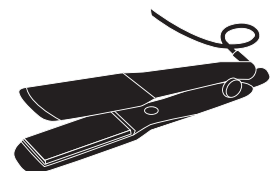
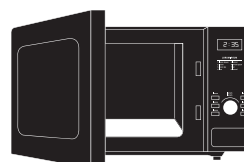
## WHAT'S INCLUDED?

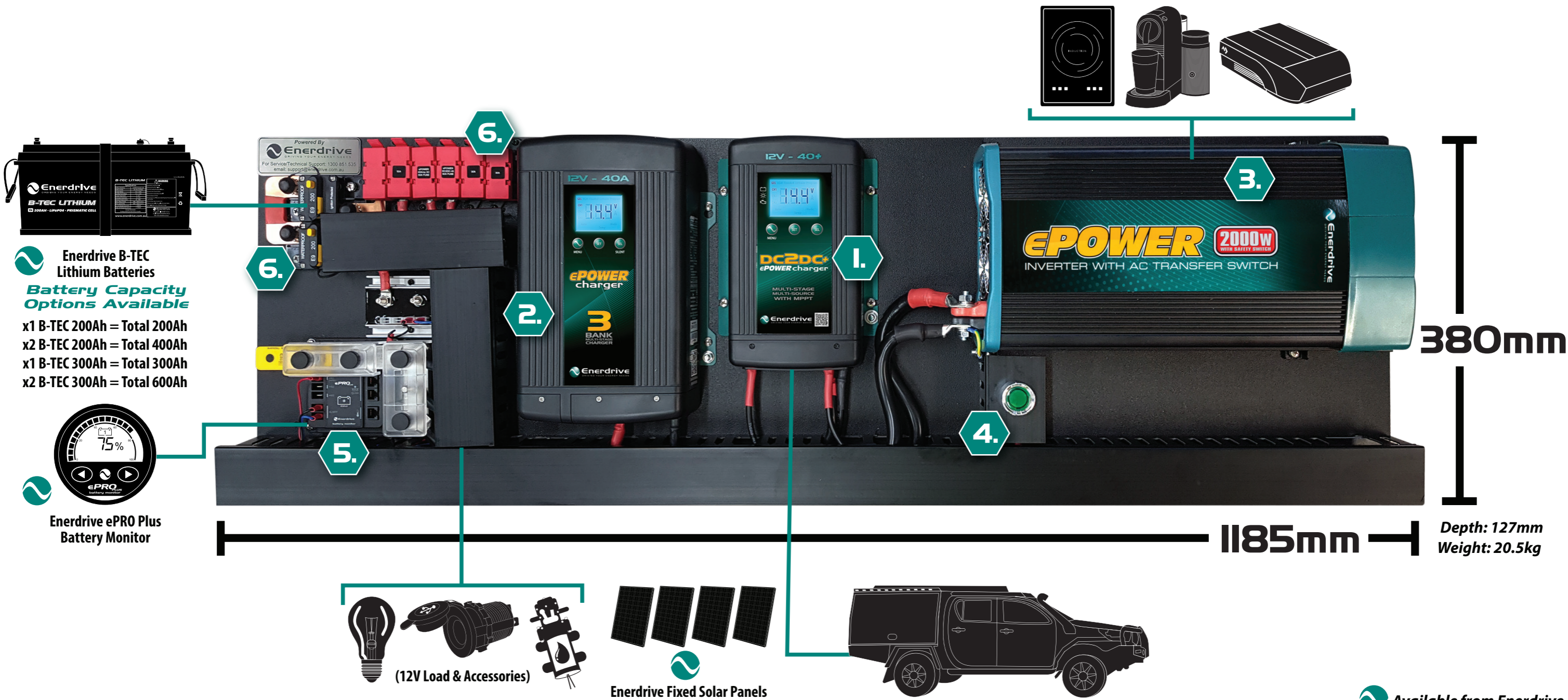
- ePOWER AC 40Amp 230v Charger
- ePOWER DC2DC 40+ Charger (Vehicle/Solar)
- ePRO Plus 500A Battery Monitor w/- Remote Display
- 3 Stud Main Negative Bus Bar
- 40A Low Battery Cutout
- Main System Circuit Breaker 120A
- Inverter Circuit Breaker 200A
- ePOWER DC2DC 60A Output Fuse Connection
- ePOWER AC Charger 50A Output Fuse Connection
- 50A Load Output Fuse Connection
- ePOWER 2000W AC Transfer Inverter
- Battery Restart Switch for Lithium Batteries (12V start only)
- 12mm Black Plastic Mounting Board - Water & Rot Resistance

## BENEFITS OF THIS SYSTEM

SERVICE & SUPPORT	DIAGRAMS AVAILABLE ONLINE
QUICK & EASY INSTALLATION	5 YEAR WARRANTY
PROGRAMMABLE FOR MOST BATTERIES	LIFETIME TECH SUPPORT

**SUITABLE FOR 12V AND AC APPLIANCES**





**COMPONENT DESCRIPTIONS**

1.	DC2DC - Safely charge your Battery System via vehicle & solar
2.	AC Charger - Safely charge your Battery System from AC Mains or Generator
3.	Inverter - Use appliances up to 2000 watts
4.	Battery Reset Button - Restart your flat Lithium Battery with ease
5.	ePRO Plus - Monitor multiple circuits; such as fridge, solar lights, etc
6.	Quality Circuit Protection

**COMPLETE YOUR SYSTEM WITH ENERDRIVE B-TEC LITHIUM BATTERIES**



**FEATURES**

5 Year Warranty
Lifetime Support
Bluetooth Battery Monitor
Battery Reset Button
Serviceable Internal Bms (by Enerdrive)
Size & Weight Savings

**TO BUILD THE ULTIMATE ENERDRIVE POWER SYSTEM,  
CONSIDER THESE SYSTEM UPGRADE OPTIONS:**

<b>eSYSTEM-C OPTIONS</b>	<b>QTY</b>
Battery to Board Cable Kit	
Solar Panels	
B-TEC Battery/Batteries	
Battery Parallel Cable Kit	
Tow Hitch to DC2DC Cable Kit	
Vehicle Start Battery to Tow Hitch Cable Kit	
Solar Cable Kit	
Consider Part# eSYS-F for Simarine Monitoring Board Version	

*Any questions please speak to your Enerdrive representative today. We can help you create the Ultimate Power System.*

**NOTES**

-----

-----

-----

-----

-----

-----

-----

-----

-----

-----

-----

-----

-----

-----

-----

-----

-----

-----

-----

-----

-----

-----

